



Social Problems



CONTENTS



Poverty



**Environmental
pollution**



**The teaching
process**



Solutions



Why Should We Care?

Social problems impact our lives directly or indirectly. They can create inequality and affect mental health and well-being. Solving them promotes peace, progress, and a better future.

Be the change you wish to see in the world.





Common Social Problems in the Modern World



Poverty

Lack of basic needs like food, shelter, and education.
Affects health and life opportunities.

Bullying

Physical or emotional harm among peers.
Common in schools and online (cyberbullying).



Environmental pollution

Harm to air, water, and land due to human activities.
Affects health and climate.

What is Discrimination?

Discrimination is the unfair treatment of people based on characteristics such as:

- Race or Ethnicity
- Gender
- Religion



Causes of Social Problems



Lack of Education: Limits opportunities for a better life.

Unemployment: Leads to poverty and crime.



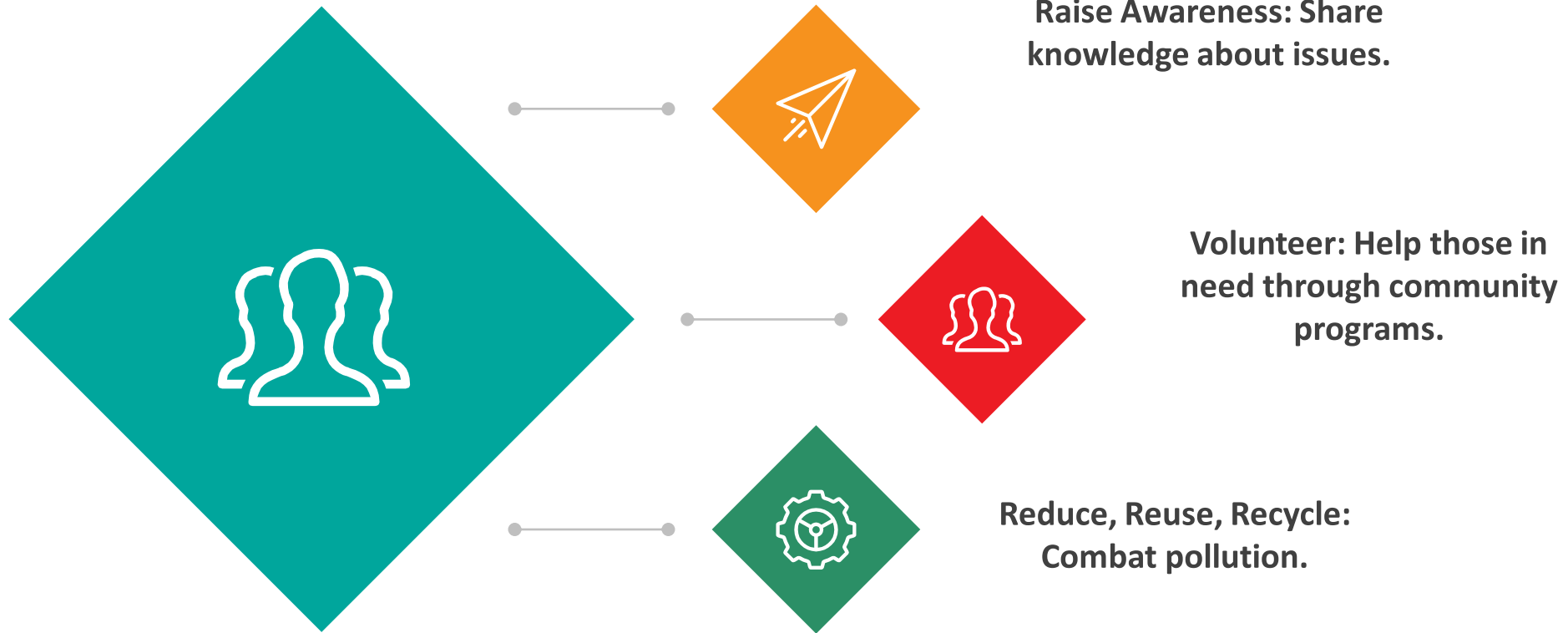
Discrimination: Treating people unfairly due to race, gender, etc.

Overpopulation: Strains resources like water, food, and jobs.

What is Bullying?
Bullying is unwanted, aggressive behavior that involves a real or perceived power imbalance. It can happen in person or online (cyberbullying).



How Can We Help?





Inspirational Examples



Malala Yousafzai:
Advocate for girls' education.

Greta Thunberg: Activist
for climate change.



3. Local Heroes: Highlight
local individuals helping
your community.



Discussion Time



What do you think is the biggest social problem today? Why?

How can students like us make a difference?

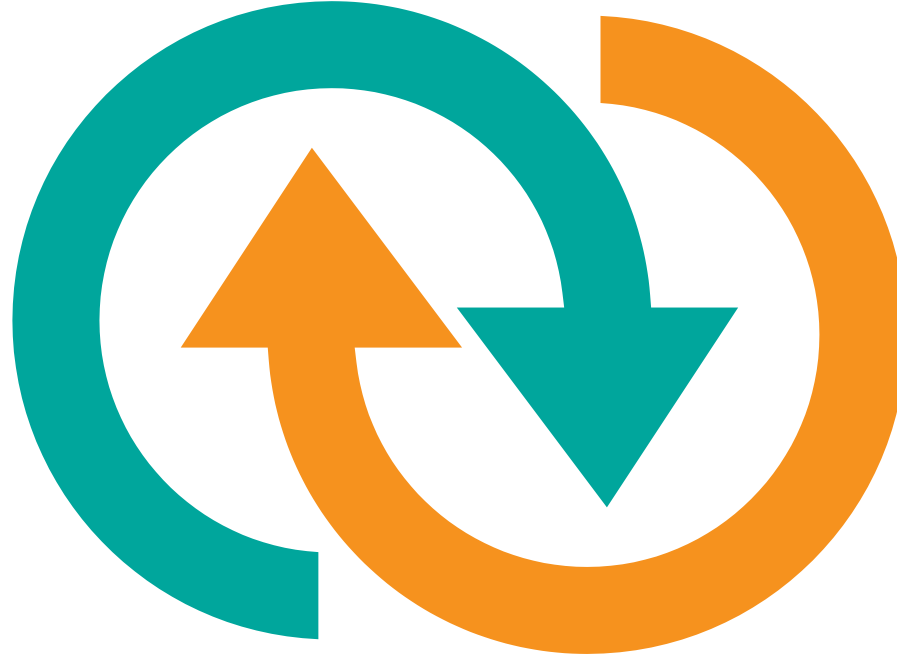
Have you ever experienced or witnessed a social problem? How did you handle it?



Closing Thoughts



“Small acts, when multiplied by millions of people, can transform the world.” – Howard Zinn



Let's take responsibility and be part of the solution!



Thank you for listening

